



- Classic Double-Row High Density Flexible LED Strip
- High CRI >90, SMD 2835 LED
- High luminous efficiency, up to 100lm/W
- High color consistency, SDCM<5, optional for SDCM<3
- Beam Angle 120°
- Durable 3oZ Rolled Copper FPC
- 6 LEDs/section, 25mm (0.98") cuttable unit
- 5-meter roll electrostatic bag package
- IP20, IP65 and IP67 version available
- 50,000H @L70 long lifetime



ORDERING GUIDE

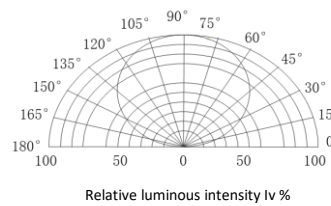
PART #	INPUT (Vdc)	POWER/ M (W)	POWER/ FT (W)	# OF LEDs/M	EFFICACY lm/W	CRI	Voltage Range	Reverse Voltage	PCB Width	FINISH
SD2835-240xx-1910	24V/12V	19.2	5.85	240	90	90	23~25Vdc	25Vdc	10mm	White FPC Board
SD2835-240xx-1910	24V/12V	19.2	5.85	240	90	90	23~25Vdc	25Vdc	10mm	White FPC Board

LUMENS PER METER

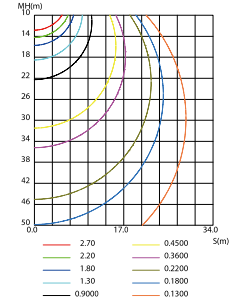
LUMINAIRE PHOTOMETRIC

Color Temperature	Lumen per meter
● 2200K	1300lm
● 2400K	1420lm
● 2700K	1500lm
● 3000K	1550lm
● 4000K	1630lm
● 5000K	1770lm
● 6000K	1720lm

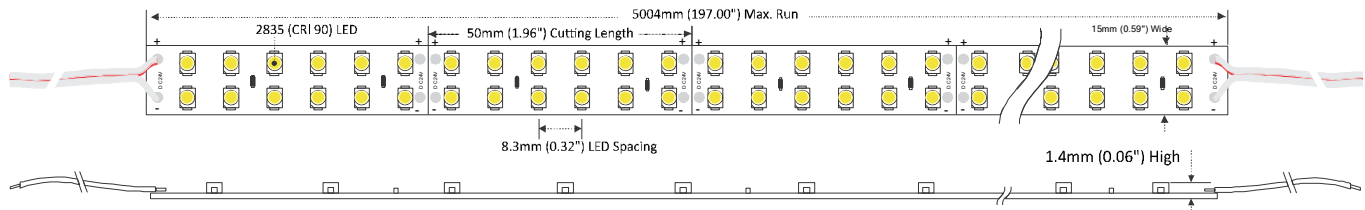
LUMINOUS INTENSITY DISTRIBUTION DIAGRAM



CO PLANE ISOLUX DIAGRAM (UNIT: lx)



DIMENSION



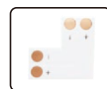
ACCESSORIES



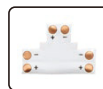
1 Part#: S10-SS2A
10mm Strip-to-Strip



2 Part#: S10-SW2
10mm Strip-to-Wire



3 Part#: F10L
10mm FPC L-connector



4 Part#: F10T
10mm FPC T-Connector

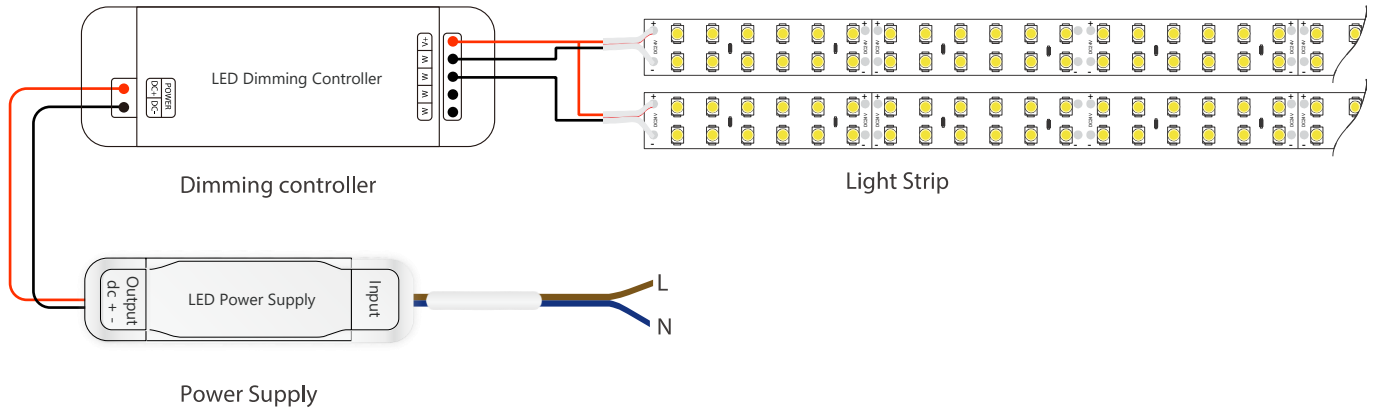


5 Part#: S10FD
10mm Dome Strip Fixing Holder



6 Part#: S10FF
10mm Flat Strip Fixing Holder

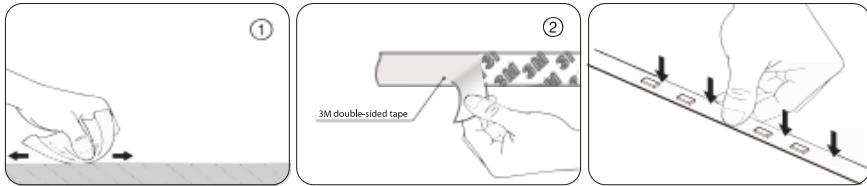
POWER CONNECTION DIAGRAM



RECOMMENDED POWER SUPPLIES

Item Number	Description	Input Voltage	Output Voltage	Dimmable	Dimensions
DVH30-24-P0-G1 CP	Non-waterproof driver 30W	120~277Vac	DC24V 1.25A	NO	160x42x30
DVH60-24-P0-G1 CP	Non-waterproof driver 60W	120~277Vac	DC24V 2.5A	NO	187x45x30.5
DVH75-24-P0-G1 CP	Non-waterproof driver 75W	120~277Vac	DC24V 3.125A	NO	187x45x30.5
DVH120-24-P0-G1 CP	Non-waterproof driver 120W	120~277Vac	DC24V 5.0A	NO	268x45x30.5
DVH150-24-P0-G1 CP	Non-waterproof driver 150W	120~277Vac	DC24V 6.25A	NO	268x45x30.5

INSTALLATION



Clean the environment part to be attached with a cloth, as shown in Figure 1, and then tear off the 3M tape on the back of the light belt, and finally stick the light belt on the clean place.

*Please refer to the installation manual for details

PACKAGING

Strip Length	Net Weight	Reel Size	Electrostatic Bag Size	# of Bags / Inner Box	Inner Box Dimension	Inner Box Gross Weight
5 meters/reel	0.18 kg	10 x 15 mm	240 x 220 mm	20	360x240x240 mm	4.5 kg
# of Inner Box / Carton Box	# of Reels / Carton Box	Carton Box Dimension	Gross Weight	# Boxes / 20' FCL	Volume	Weight
2	40	500x260x380 mm	9.5 kg	500	25 CBM	4,750kg

